



Publishing with the Journal of Experimental Botany



Dr Mike Page, JXB Managing Editor

m.page2@lancaster.ac.uk

 @mikeTpage

j.exp.bot@lancaster.ac.uk

 @JXBot

 jxbotany

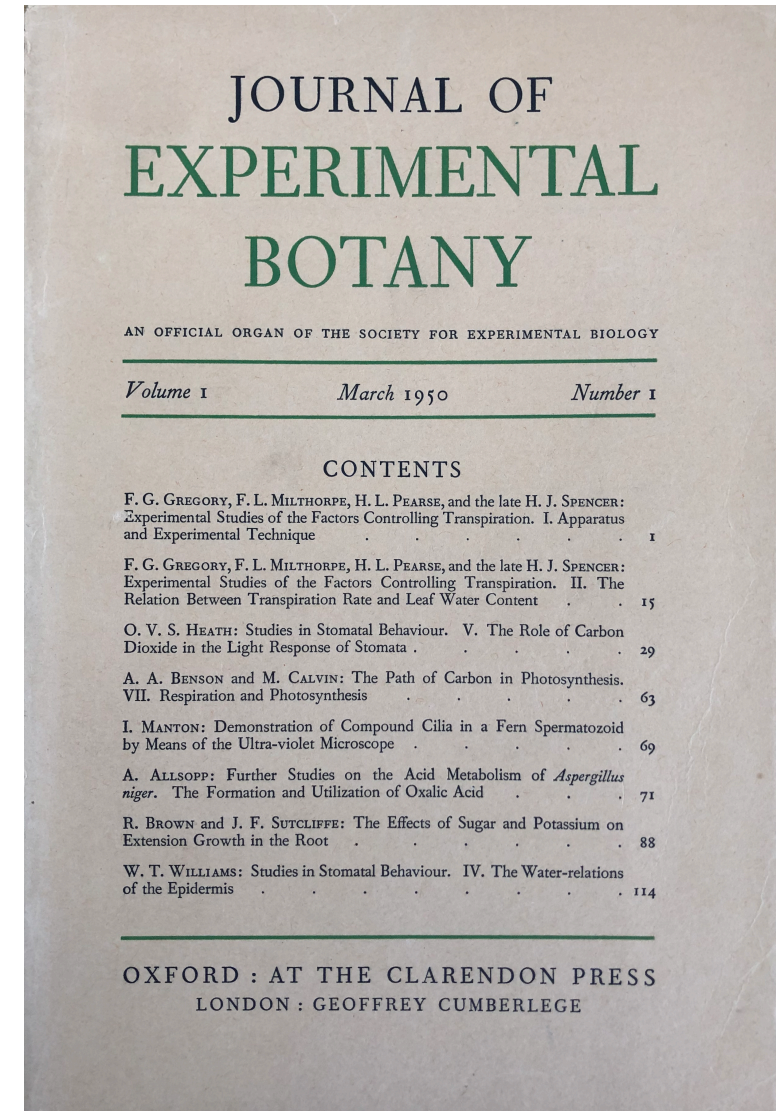
JXB homepage: <https://academic.oup.com/jxb>

JXB submission site: <https://submit.jxbot.org>

A brief history of JXB



- SEB Council set up a subcommittee on “the publication of botanical papers”, and as a result of their report, the Journal of Experimental Botany was founded in 1947.
- The first issue of JXB published in 1950.
- Owned by the Society for Experimental Biology (SEB) and published by Oxford University Press (OUP).
- Ceased printing at the end of 2020.
- Current Editor-in-Chief is John Lunn (Max Planck, Potsdam, Germany).

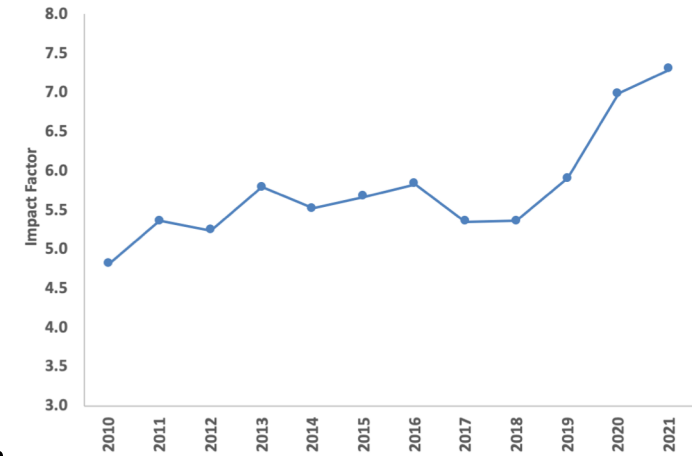


Reasons to submit to JXB

- **JXB is a community journal**
 - All profits re-invested into the community by the SEB.
 - Read & Publish deals facilitate open access publishing (more later).
 - No additional charges on publication.
 - Special issues help to support the community.
 - Option to transfer declined manuscripts to Plant Direct.
 - Supportive of early career researchers.
 - Flexible formatting at first submission.



Reasons to submit to JXB



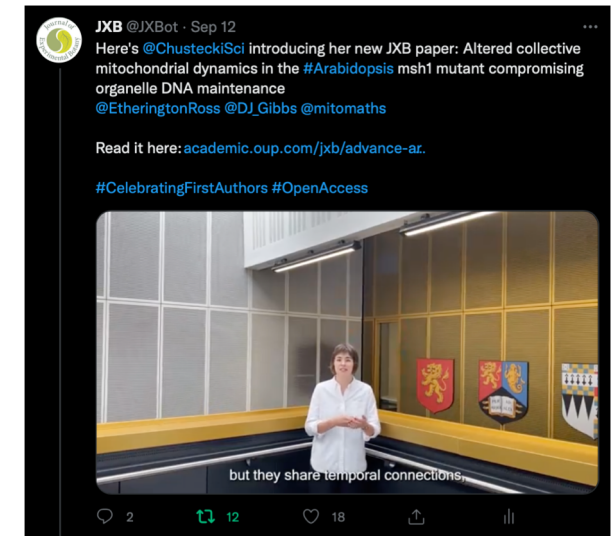
- **JXB has a strong reputation**
 - Rising impact factor (7.298 in 2021).
 - Top 10 plant science research journal.
 - Large, diverse, experienced editorial board.
 - Dedicated editorial office (customer service).
 - Professional copy-editors.
 - High-quality, constructive peer-review.
 - Committed to a high standard of ethics.
 - Fast publication after acceptance (8-9 days).



Reasons to submit to JXB

- **Committed to open science**
 - Fully integrated with bioRxiv.
 - Progressive open data policies.
 - Free data deposition at Dryad up to 20 Gb.
- **Promotion of your work**
 - Editor's choice awarded every issue.
 - Insight articles (commentaries).
 - First author videos.
 - Active on Twitter.
 - Table of content alerts for every issue.

bioRxiv
THE PREPRINT SERVER FOR BIOLOGY



Types of manuscript

- **Research manuscripts should...**
 - ✓ Present new information on fundamental processes or mechanisms.
 - ✓ Represent a significant advance for the plant science community.
 - ✓ Be concisely written.
 - ✗ Not be solely descriptive.
 - ✗ Not just confirm a known process in a species in which it hasn't previously been described.

Types of manuscript

- **Review manuscripts should...**
 - ✓ Be timely in their contribution.
 - ✓ Bring new thinking or perspectives to a topic.
 - ✓ Represent a balanced assessment of the literature.
 - ✗ Not be a simple catalogue of the existing literature.
 - ✗ Not present new primary data.
- **Expert View manuscripts (short reviews, 3000 words) should...**
 - ✓ Communicate changes over the past two or three years in a specific area of plant science.
 - ✓ Include a 'key developments box'.

Types of manuscript

- **Technical Innovations should...**
 - ✓ Present a new method, or a significant improvement on an existing method.
 - ✓ Demonstrate the potential of the method to bring new biological insight.
 - ✓ Have broad applicability.
 - ✓ Include an open access method (www.protocols.io).
 - ✗ Not present small adjustments to existing methods.
 - ✗ Not present methods with very limited applicability.

Types of manuscript

- **Community Resources should...**
 - ✓ Present announcements of new publicly available tools, databases or germplasm.
 - ✓ Have broad applicability.
 - ✓ Address an important issue in the community.

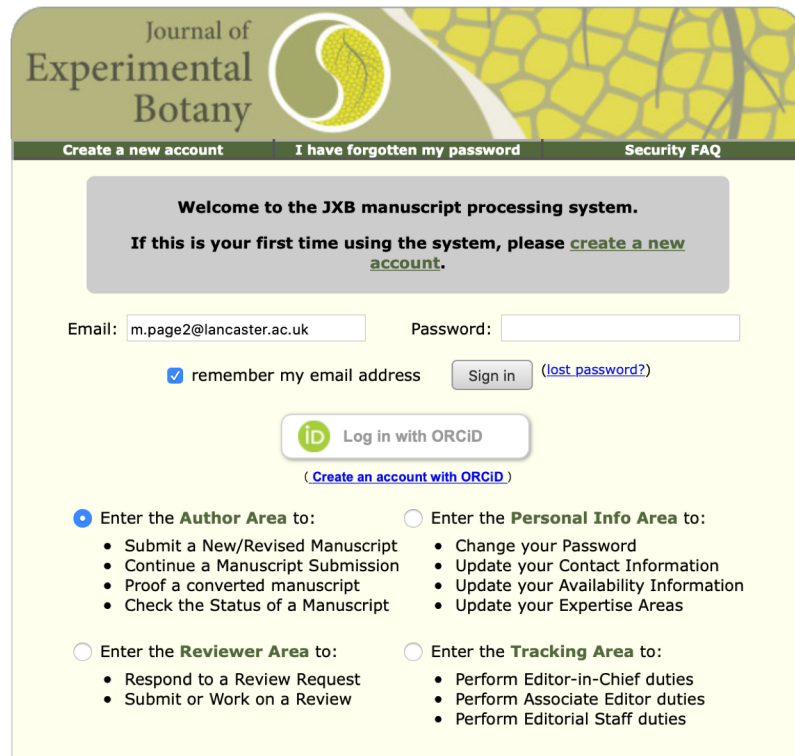
Types of manuscript

- **eXtra Botany (editorial material)**
 - **Viewpoints (1500 words)**
Short comment pieces on current issues in plant science.
 - **Insights (1500 words)**
Commentaries on JXB's most exciting papers.
 - **Editorials (2500 words)**
Give context to collections of papers
Summarise the state of the field or raise outstanding questions.

How to submit

- **Flexible formatting:** Continuous line numbering, figures legible with legends, English sufficient to understand the science.

<https://submit.jxbot.org>



Journal of Experimental Botany

Create a new account | I have forgotten my password | Security FAQ

Welcome to the JXB manuscript processing system.
If this is your first time using the system, please [create a new account](#).

Email: Password:

remember my email address ([lost password?](#))

[\(Create an account with ORCID\)](#)

Enter the **Author Area** to:

- Submit a New/Revised Manuscript
- Continue a Manuscript Submission
- Proof a converted manuscript
- Check the Status of a Manuscript

Enter the **Personal Info Area** to:

- Change your Password
- Update your Contact Information
- Update your Availability Information
- Update your Expertise Areas

Enter the **Reviewer Area** to:

- Respond to a Review Request
- Submit or Work on a Review

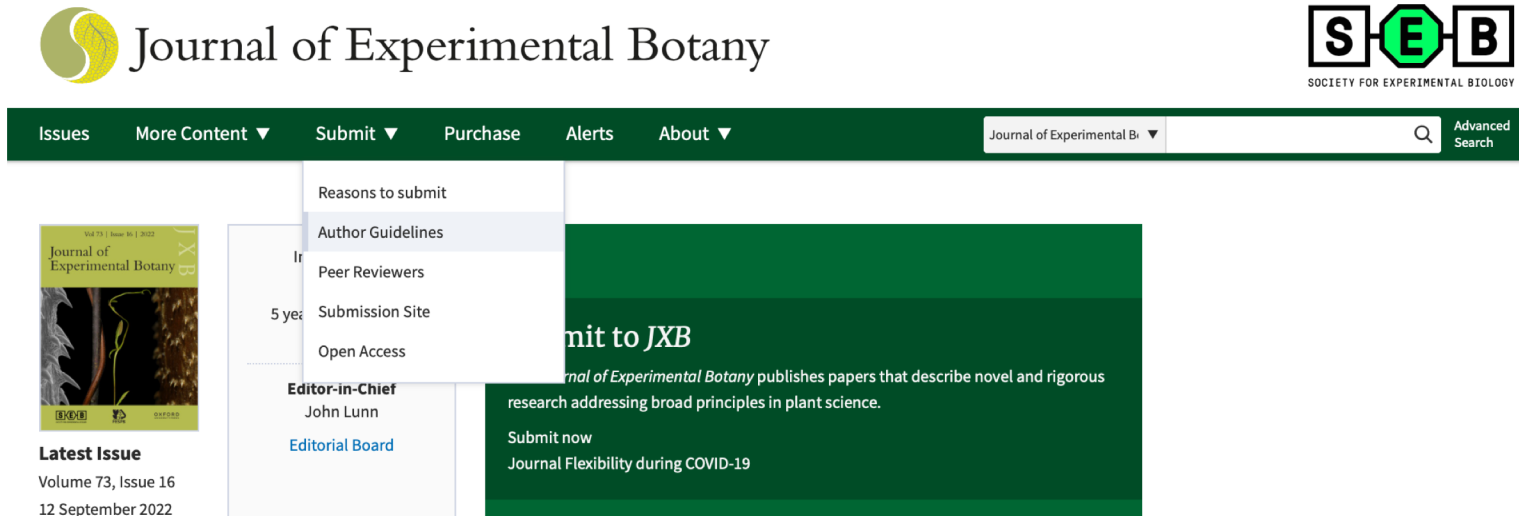
Enter the **Tracking Area** to:

- Perform Editor-in-Chief duties
- Perform Associate Editor duties
- Perform Editorial Staff duties

- Follow the prompts in the system
- Manuscript = .docx file
- Supplementary data = .pdf / .xlsx
- Indicate if you have primary data to deposit in a repository
- Suggest an editor
- Suggest/exclude reviewers (justify)

General tips for success

- Read the Author Guidelines before submitting (Editorial Policies).
- Ensure your methods are very well described – you have unlimited space for this. **Do not** leave a long citation trail.
- Include **all** detail on replication for each experiment (in figure legends).
- Pay special attention to the Title, Abstract & Highlight.



The screenshot shows the website for the Journal of Experimental Botany. At the top left is the journal's logo, and at the top right is the Society for Experimental Biology (SEB) logo. A dark green navigation bar contains links for Issues, More Content, Submit, Purchase, Alerts, and About. A search bar is located on the right side of the navigation bar. Below the navigation bar, a dropdown menu is open under the 'Submit' link, listing options: Reasons to submit, Author Guidelines, In... (partially visible), Peer Reviewers, 5 year Submission Site, and Open Access. To the left of the dropdown menu, there is a thumbnail for the latest issue, Volume 73, Issue 16, dated 12 September 2022. Below the thumbnail, the text reads 'Latest Issue', 'Volume 73, Issue 16', and '12 September 2022'. To the right of the dropdown menu, there is a green box with the text 'Submit to JXB' and a description: 'Journal of Experimental Botany publishes papers that describe novel and rigorous research addressing broad principles in plant science.' Below this text are the links 'Submit now' and 'Journal Flexibility during COVID-19'.

Cover letter

- JXB has recently changed the format of its cover letter.
 - Three questions, 50 words per answer.
1. What is the main question your manuscript seeks to answer?
 2. How does your manuscript advance understanding of the topic?
 3. Why is this work timely and important?
- Include underneath any other relevant information for the editor.

English

- The level of English must be sufficient for the editor and reviewers to understand and assess the science in a manuscript.
- If it isn't, we may ask authors to improve the level of English.
- Some options below, not endorsed by JXB:

£££ Professional manuscript editing services

£ Grammarly Premium (<https://www.grammarly.com>)

FREE Writefull (<https://www.writefull.com>)

FREE Paperpal (<https://paperpal.com>)

FREE DeepL Translate / Linguee (<https://www.linguee.com>)

FREE Co-authors / colleague

Figures

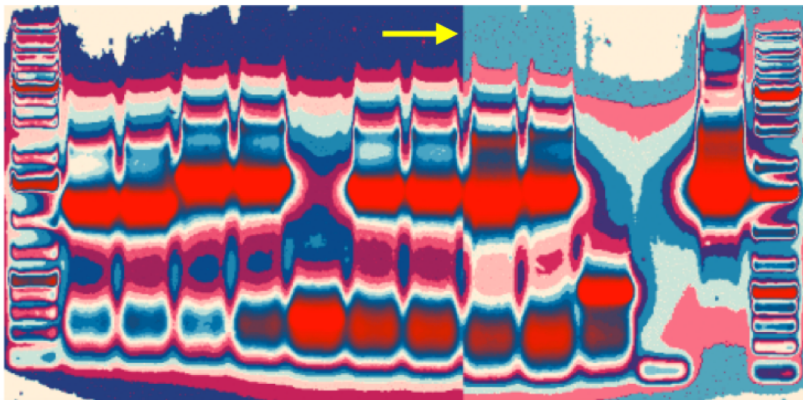
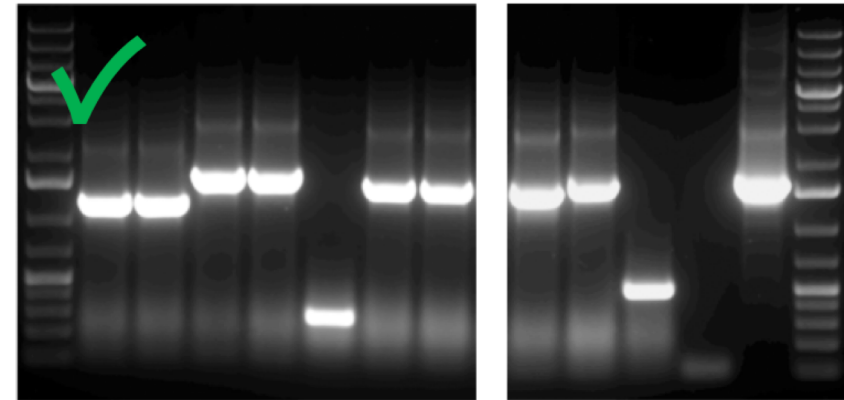
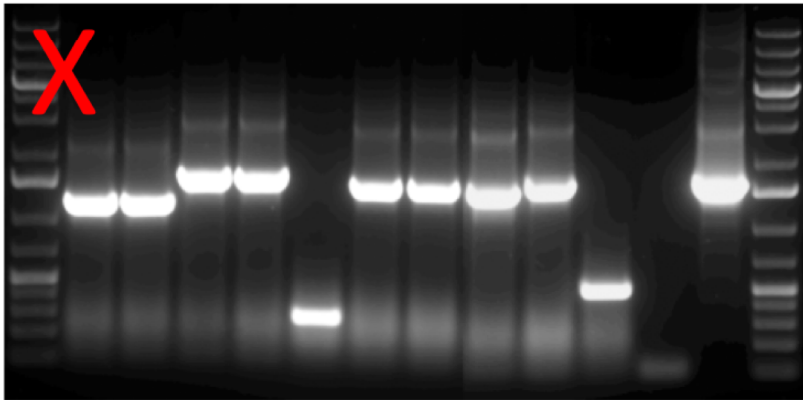
- JXB has a Figure Policy (access [here](#)).
- Every accepted JXB manuscript is screened for image issues.
- Serious breaches of JXB's Figure Policy result in rejection.
- JXB retracts published papers with serious image issues.

- Keep your original data (10 years post-publication).
- JXB encourages authors to submit primary data (repositories).
- Avoid unnecessary editing of raw data.
- Be clear when images have been adjusted / cropped, and provide originals whenever possible.



Figures

- Do not present composite figures. Make it clear when individual images have been used.



Figures

- Do not duplicate data within a manuscript.

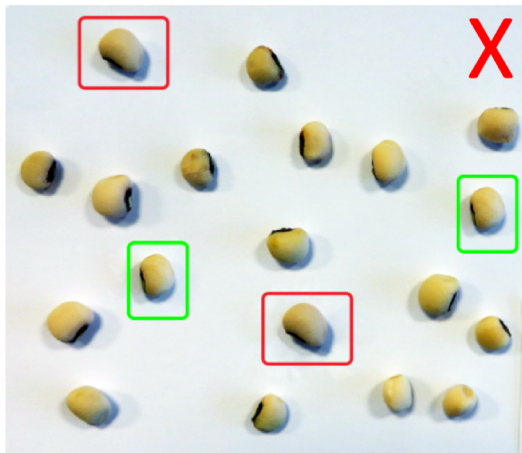
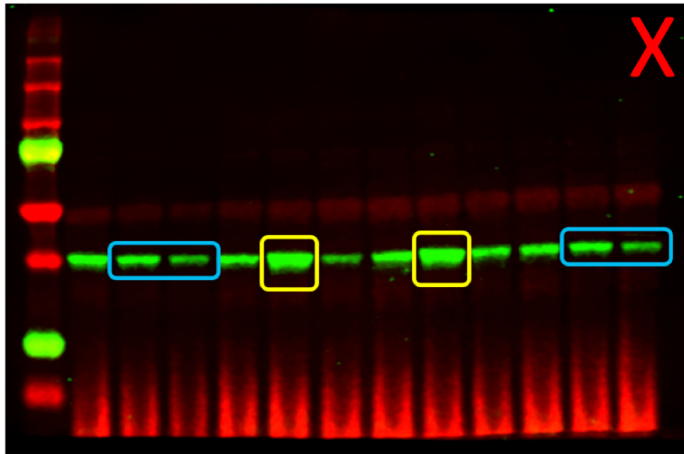


Figure 1

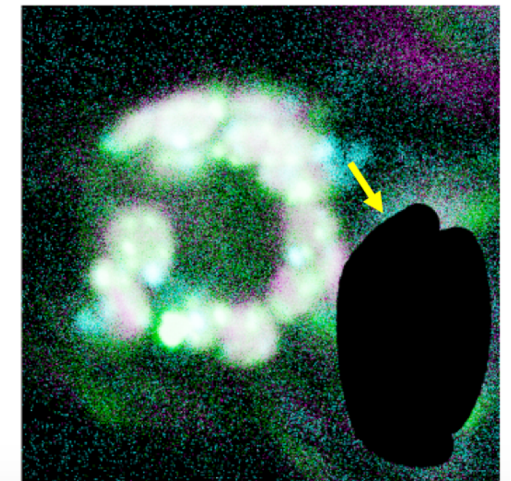
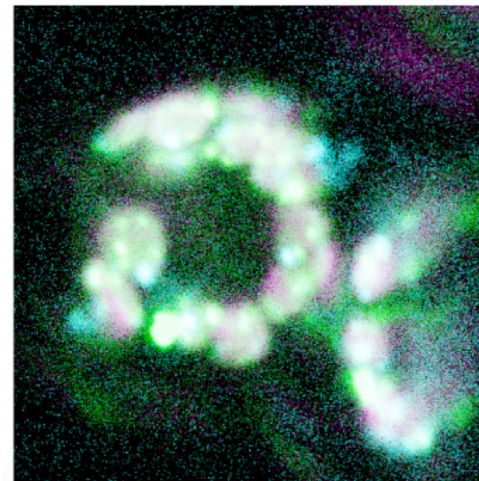
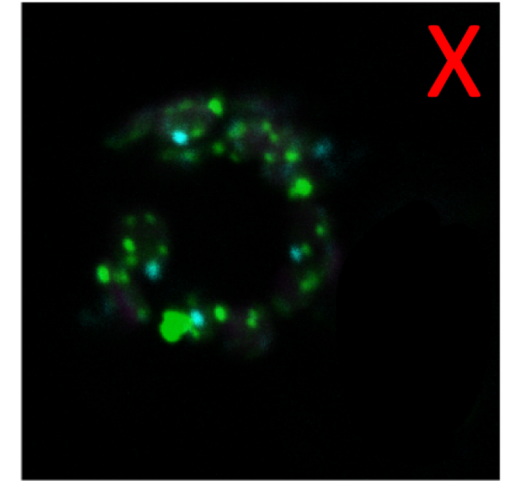
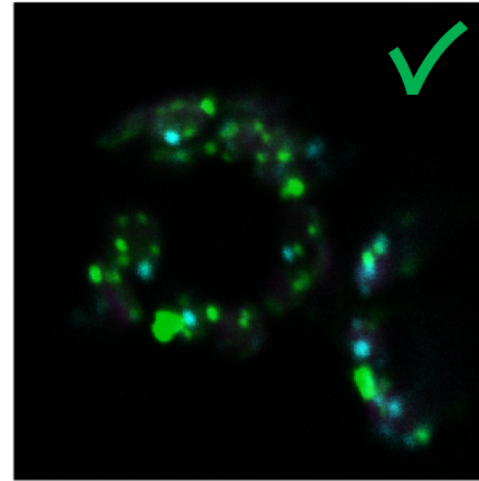
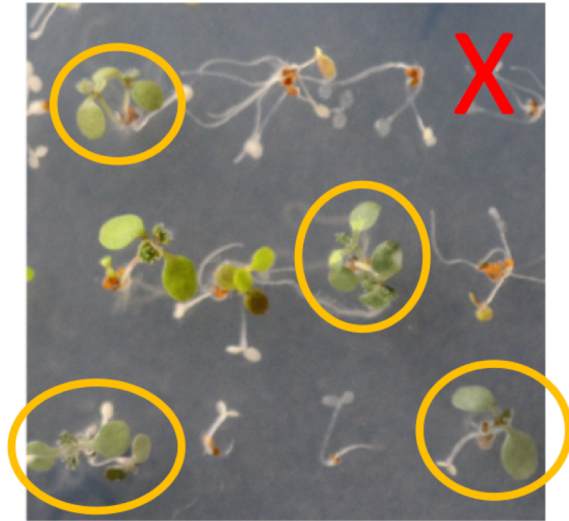
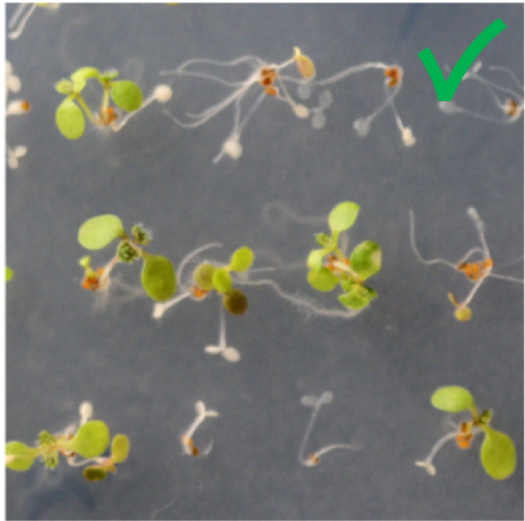


Figure 2



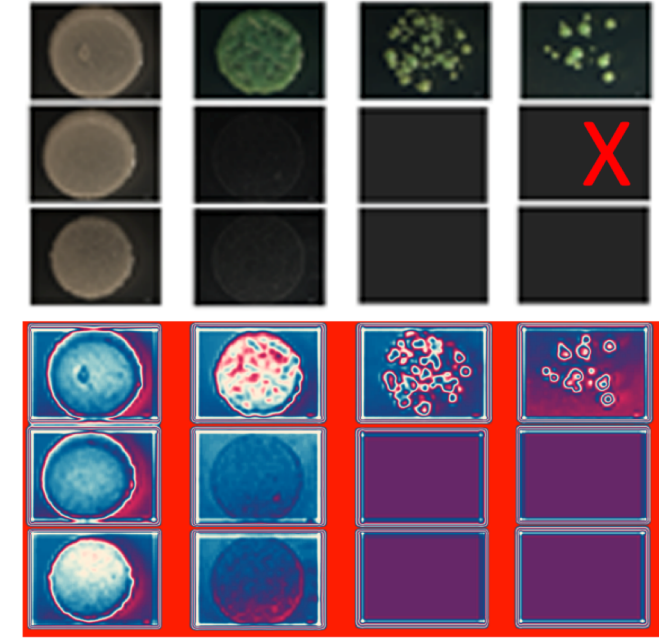
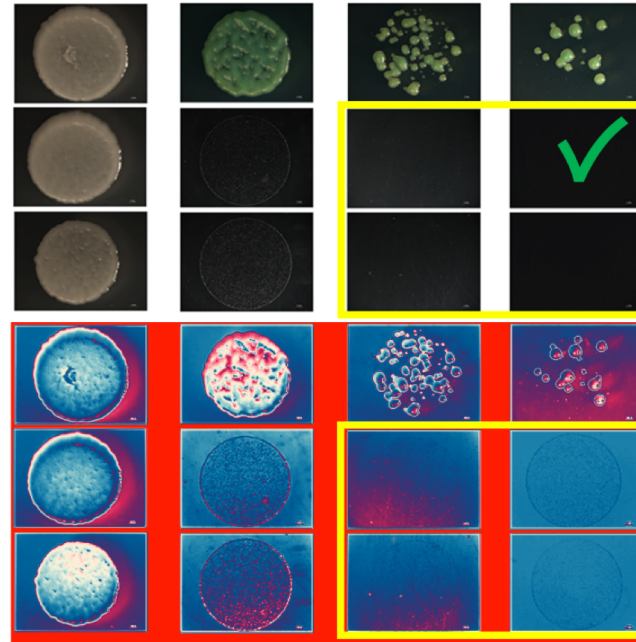
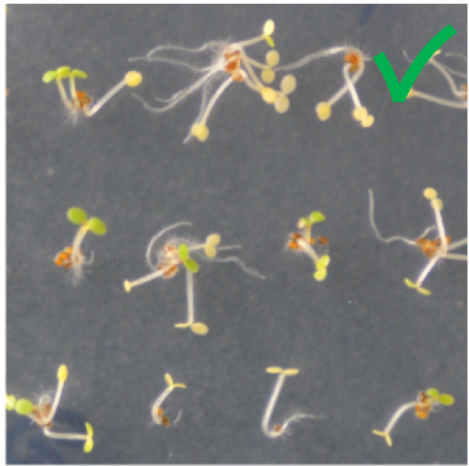
Figures

- Do not selectively alter specific regions within images.



Figures

- Do not remove the background or isolate elements in figures.



Peer review

- JXB operates a two-step editorial screening system.
→ Associate editors & handling editors.



DECISIONS

- Accept
 - Minor revisions
 - Major revisions
 - Reject, encouragement to resubmit
 - Reject
 - Reject without review
- Please suggest reviewers.
 - Two reviewers per manuscript.
 - Editors not bound by reviews.
 - One major revision per manuscript.
 - Revision windows are flexible.
- Please contact us if you'd like a progress report on your manuscript.

Responding to peer review

- Respond to:
 - Editor's comments from the decision letter.
 - Reviewers' comments from their reports.
 - Editorial staff comments from the decision letter.
- Respond to **ALL** comments.
- If you disagree, it is fine to rebut specific points – use science/data to rebut.
- Submit a 'Response to Reviewers' statement with your new version.
- Submit a clean version as your manuscript file, and a track-changes version as a supplementary file.



If your manuscript is rejected

- Use the comments from the editor and reviewers to improve your manuscript for submission elsewhere.
- JXB has a transfer agreement with Plant Direct.
- If you disagree with the decision, you may submit a rebuttal to the editorial office.
- Rebuttals are integrated into our manuscript handling system.
- Decisions may be maintained or overturned.
- Use scientific reasoning in your rebuttal.



If your manuscript is accepted

- We may request new files.
- We then transfer your manuscript to our publisher, OUP.
- **OUP will request that the authors sign a licence to publish (link via e-mail).**
- The accepted version is given a doi & published online (advance access).
- OUP down-streams your paper (Web of Science, Pubmed, Scopus etc).
- OUP also generate a pre-edit file (MS Word).
- Our copy-editors edit your pre-edit (typos, formatting, consistency).
- **The copy-editors may liaise with the authors if they have queries.**
- OUP then generates the final proof (pdf).
- **Authors are required to check the proof carefully.**
- Corrected proofs are then published online.
- The editorial office compiles your manuscript into an issue.



Signing a licence

- This is done through the OUP licencing portal (you will receive an e-mail)
- JXB offers two main types of licence:
 - **Open-access licence** – your paper is published open-access, and is available to everyone immediately on publication. This licence is subject to an article processing charge (APC).
 - **Standard licence** – your paper is published under subscription control, so only subscribers of the journal will be able to read it for the first 12 months. After this time, your paper will be available to everyone. This licence is free.

CAS and open-access



- The Chinese Academy of Sciences (CAS) and OUP have agreed a Read & Publish deal.
- Authors working at a CAS institution are eligible to sign an open-access licence, and refer the payment to CAS. Authors do not pay the APC.
- The **corresponding author** must work at a CAS institution.
- In the OUP licence portal, select the open-access licence, and then refer your payment to the Chinese Academy of Sciences.
- Select the ‘Refer payment’ box.
- Participating institutions can be found on our webpage.

Chinese Academy of Sciences

中国科学院

Authors from participating Chinese Academy of Sciences member institutions can request use of funds to pay their Open Access charge when arranging payment in OUP's online licensing and payment system.

在OUP在线许可和付款系统中进行付款时，来自中国科学院所属机构的作者可以申请使用中国科学院开放获取帐户资金支付其开放获取费用。

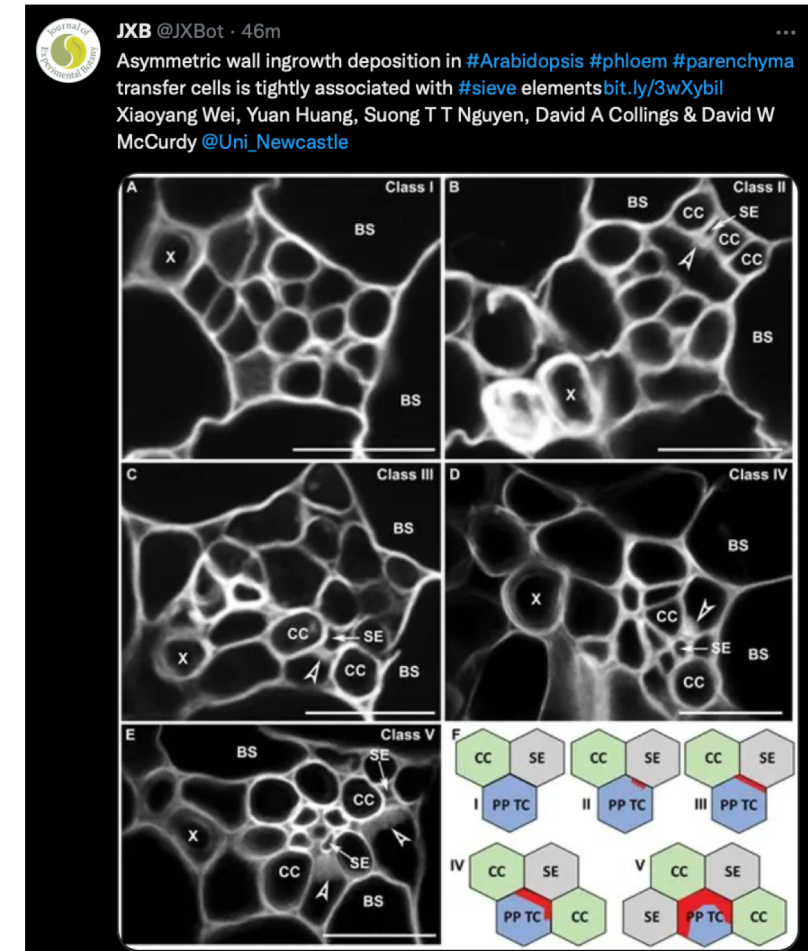
[Link to CAS Read & Publish deal webpage](#)

[Link to video on how to sign a licence for CAS authors](#)

(password = cas1234)

Promoting your work

- JXB promotes every accepted paper on Twitter (14,700 followers). If you have a Twitter account, please send us a message and we will include this in tweets.
- Authors may distribute a link to their paper among their networks, and promote on social media.
- JXB helps early career researchers to promote themselves and their work through first author videos.
- Top JXB articles have an accompanying Insight article (commentary).
- One article in every issue is selected as the Editor's Choice – a summary of the paper is written-up for the SEB Newsletter and website.
- OUP distributes a Table of Contents (TOC) alert by e-mail for every issue when it is published.





Publishing with the Journal of Experimental Botany



Dr Mike Page, JXB Managing Editor

m.page2@lancaster.ac.uk

 @mikeTpage

j.exp.bot@lancaster.ac.uk

 @JXBot

 jxbotany

Homepage: <https://academic.oup.com/jxb>

Submission site: <https://submit.jxbot.org>